



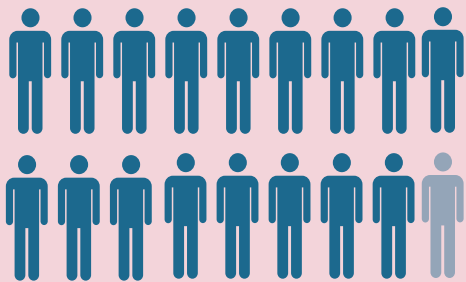
Law, Public Safety & Security

The Law, Public Safety and Security Career Cluster is divided into five pathways: corrections; emergency and fire management; law enforcement; legal; and security protection. Students in these programs are preparing to plan, manage and provide legal, public safety, protective services and homeland security, including professional and technical support services.

2017-18

17,339

enrollments in
High School
programs



+

1,665

enrollments in
Middle School
programs



=

19,004

= 1,000

Top High School Programs

Criminal Justice Operations (15,746)

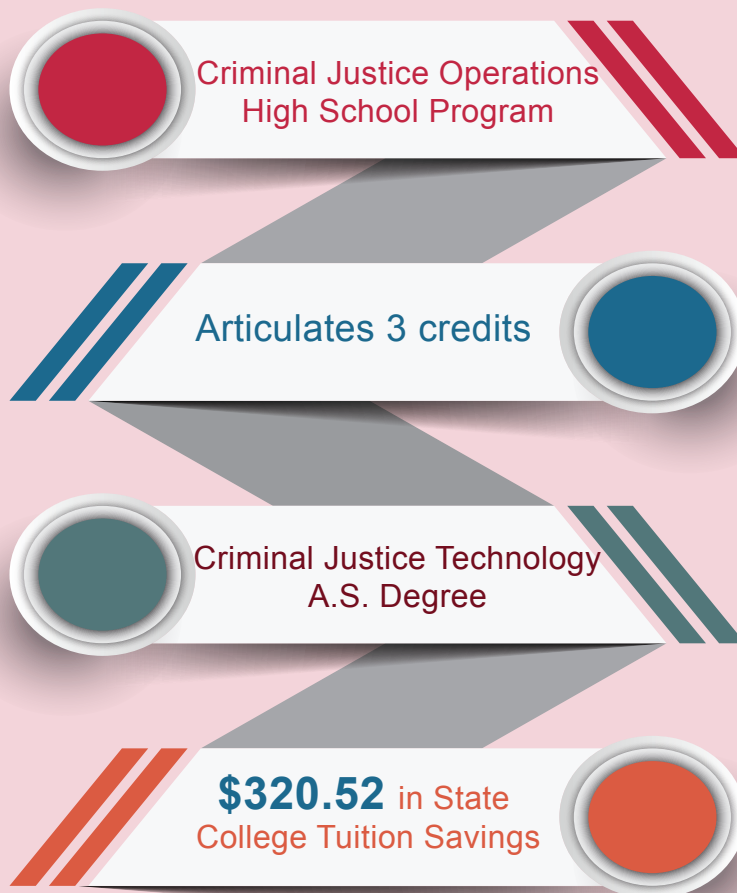
Introduction to Fire Fighting (1,068)

Public Safety Telecommunication (255)

Top Certifications Earned by K-12 Students



Sample of Local Articulation Pathway to College



*Articulation in this career cluster varies per local institution.

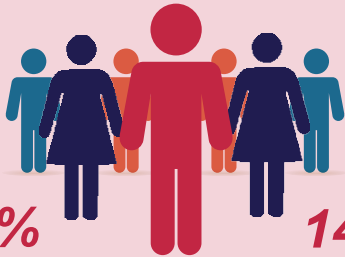
Postsecondary



& Employment

2,651

District
Postsecondary
Enrollments

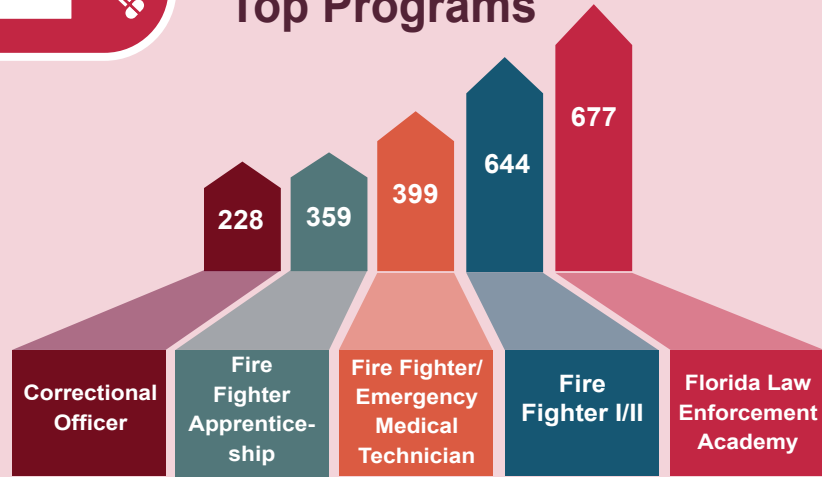


86%
Certificate

14%
Apprenticeship

19
Districts

Top Programs



Top Certifications Earned by District Postsecondary Students

Employment Outlook

High Growth



Fire Fighter

High Wage



Police & Sheriff's
Patrol Officers

Annual Openings



Correctional Officer

Notes: Based on 2017-18 data. Postsecondary enrollment is limited to district programs and includes dual enrollment students. Enrollment outlook is based on the 2018-19 Statewide Demand Occupations List.